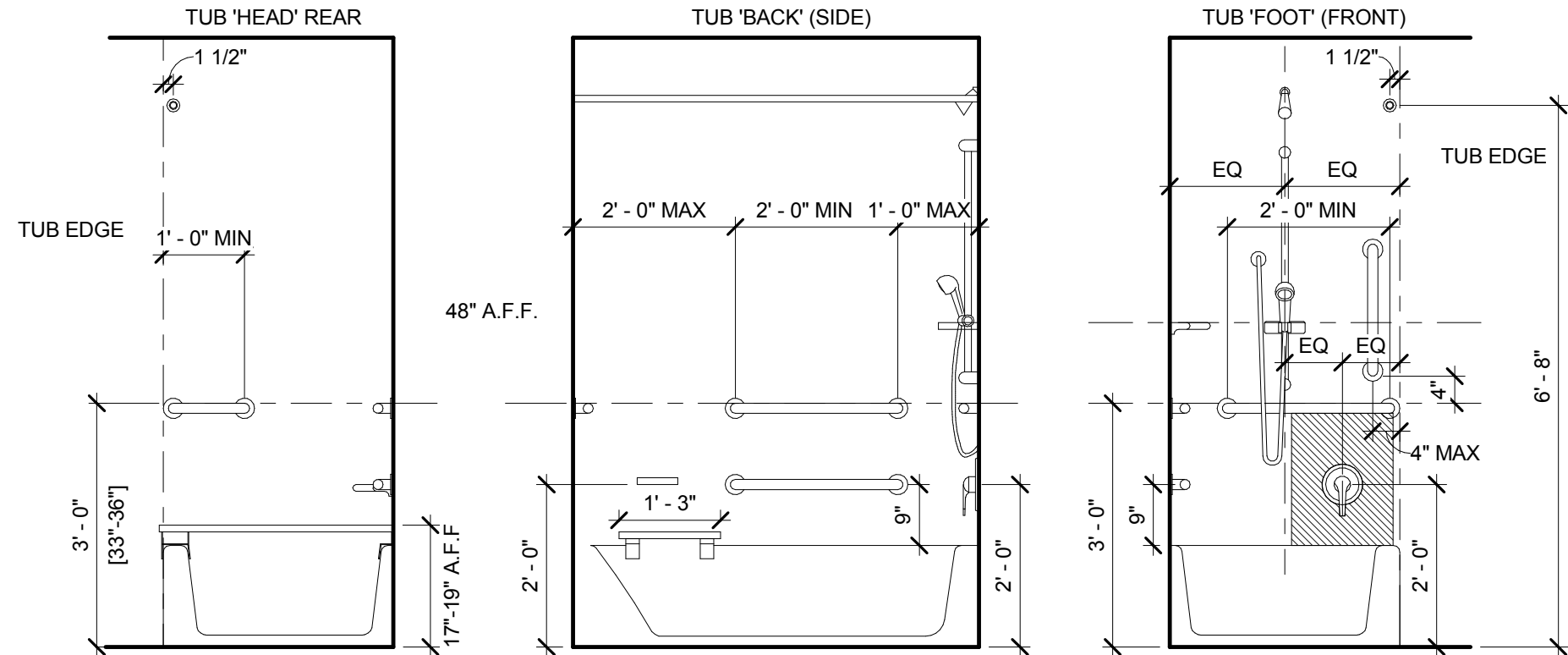


1 Accessible Shower Layout (36"x60")
1/2" = 1'-0"

- A HOTEL STANDARDS SHOWER HEAD
B HAND HELD SHOWER HEAD ATTACHED TO WALL WITH COMPATIBLE MOUNTING POST CONNECTED TO 90° PLUMBING BELOW (CHROME W/ ESCUTCHEON FACING DOWN) WITH MIN. 59" SOFT VINYL HOSE (WHITE) - PROVIDE POSITIVE SHUT OFF SWITCH - UNIT SHALL DELIVER WATER AT 120 F MAXIMUM - MUST BE USABLE IN A FIXED OR HAND-HELD POSITION TYPICALLY USING AN ADJUSTABLE BAR
C DIVERTER FAUCET WITH PERMANENT LABELS INDICATING OPERATION DIRECTION - WHEN FAUCET IS POINTING TOWARDS STANDARD SHOWER HEAD (AS INDICATED) IT OPERATES THE STANDARD SHOWER HEAD. WHEN POINTING TOWARDS THE HAND-HELD SHOWER IT OPERATES THE HAND-HELD SHOWER HEAD - LABELS SHALL READ: "UPPER SHOWER HEAD" & "HAND HELD SHOWER HEAD" AND BE PERMANENTLY AFFIXED TO WALL
D CONTROLS MOUNTED OFF CENTER TOWARDS SHOWER SEAT
E SHOWER SEAT (FOLDING) REFER TO TOILET ACCESSORY SCHEDULE
F GRAB BARS- TYP. REFER TO MOUNTING HEIGHTS
G ACCESSIBLE "REACH" MAXIMUM HEIGHT
H SOAP DISHES CENTERED AS INDICATED OR PER TILE LAYOUT
I OPERATION: WATER FLOWS FROM MIXING VALVE TO DIVERTER FAUCET THEN:
- ACTIVATION OF DIVERTER FAUCET SWITCHES BETWEEN HAND HELD AND STANDARD SPOUT/SHOWER
N PROVIDE BLOCKING AS NECESSARY
P ACCESSIBLE CONTROLS AREA *PROVIDE MIN. DISTANCE PER LOCAL CODE REQUIREMENTS
O SLOPE TILE TO FLOOR DRAIN. SLOPE NOT TO EXCEED 1:48

NOTE: ALL GRAB BARS AND SEATS MUST BE BLOCKED/ REINFORCED TO WITHSTAND ACCESSIBILITY REQUIRED LOAD LIMITS

3 ADA Shower Keynotes
1/2" = 1'-0"

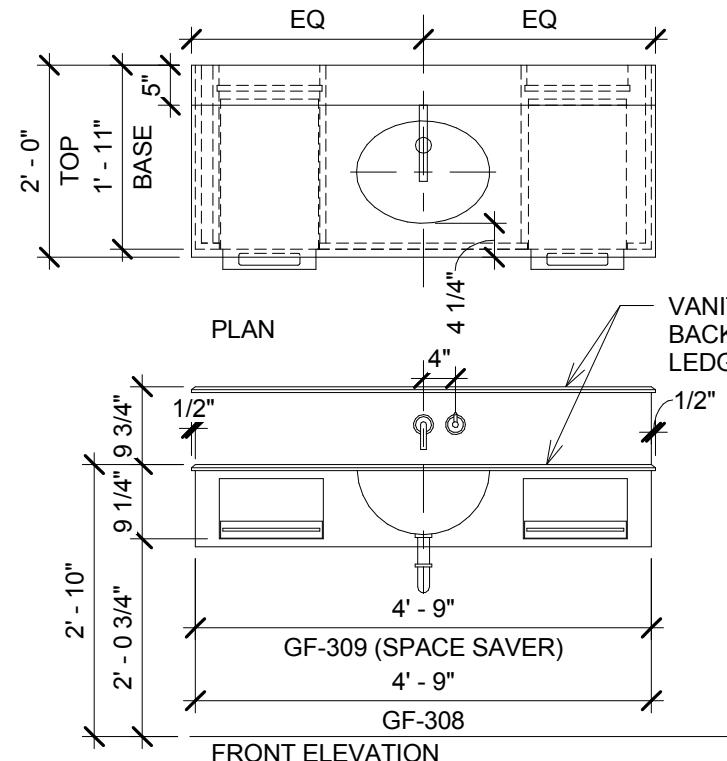


2 Accessible Tub Layout
1/2" = 1'-0"

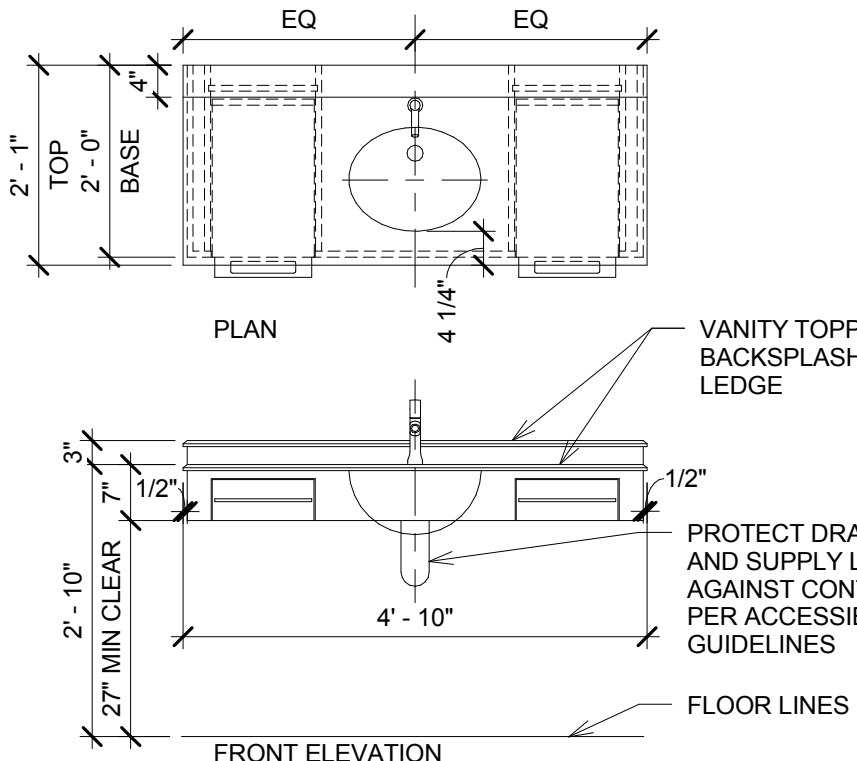
- A HAND STANDARD SHOWER HEAD
B HAND HELD SHOWER HEAD W/ 60" HOSE ATTACHED TO ADJUSTABLE HEIGHT BAR. MOUNT BAR TO ALLOW SHOWER HEAD TO BE PLACED WITHIN ACCESSIBLE REACH RANGE. MOUNT ADJUSTABLE BAR SO AS NOT TO CONFLICT WITH GRAB BAR - PROVIDE POSITIVE SHUT OFF SWITCH - UNIT SHALL DELIVER WATER AT 120 F MAXIMUM
C DIVERTER FAUCET WITH PERMANENT LABELS INDICATING OPERATION DIRECTION - WHEN FAUCET IS POINTING TOWARDS STANDARD SHOWER HEAD (AS INDICATED) IT OPERATES THE STANDARD SHOWER HEAD. WHEN POINTING TOWARDS THE HAND-HELD SHOWER IT OPERATES THE HAND-HELD SHOWER HEAD - LABELS SHALL READ: "UPPER SHOWER HEAD" & "HAND HELD SHOWER HEAD" AND BE PERMANENTLY AFFIXED TO WALL
D CONTROLS MOUNTED OFF CENTER TOWARDS SHOWER TUB
E PADDED REMOVABLE ACCESSIBLE TUB SEAT - TO BE 15"-16" DEEP AND AT 17"-19" ABOVE FINISHED FLOOR WHEN IN USE
F GRAB BARS- TYP. REFER TO MOUNTING HEIGHTS
G ACCESSIBLE "REACH" MAXIMUM HEIGHT
H SOAP DISHES
I OPERATION: WATER FLOWS FROM MIXING VALVE TO DIVERTER FAUCET THEN:
- ACTIVATION OF DIVERTER FAUCET SWITCHES BETWEEN HAND HELD AND STANDARD SPOUT/SHOWER
N PROVIDE BLOCKING AS NECESSARY
P ACCESSIBLE CONTROLS AREA

NOTE: ALL GRAB BARS AND SEATS MUST BE BLOCKED/ REINFORCED TO WITHSTAND ACCESSIBILITY REQUIRED LOAD LIMITS

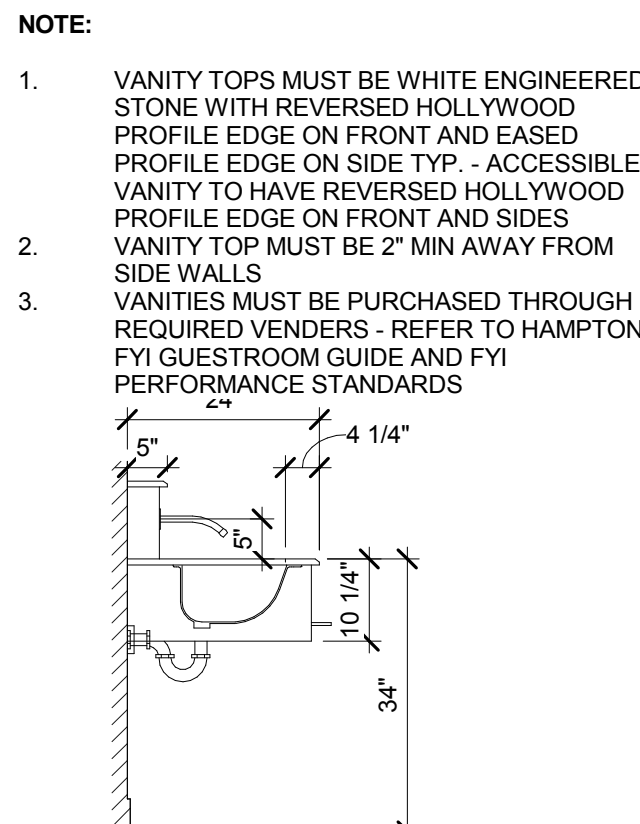
4 ADA Tub Keynotes
1/2" = 1'-0"



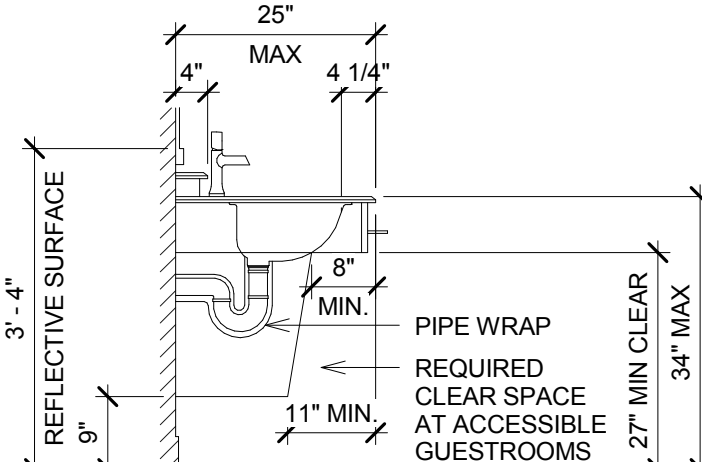
5 Typical Guest Vanity
1/2" = 1'-0"



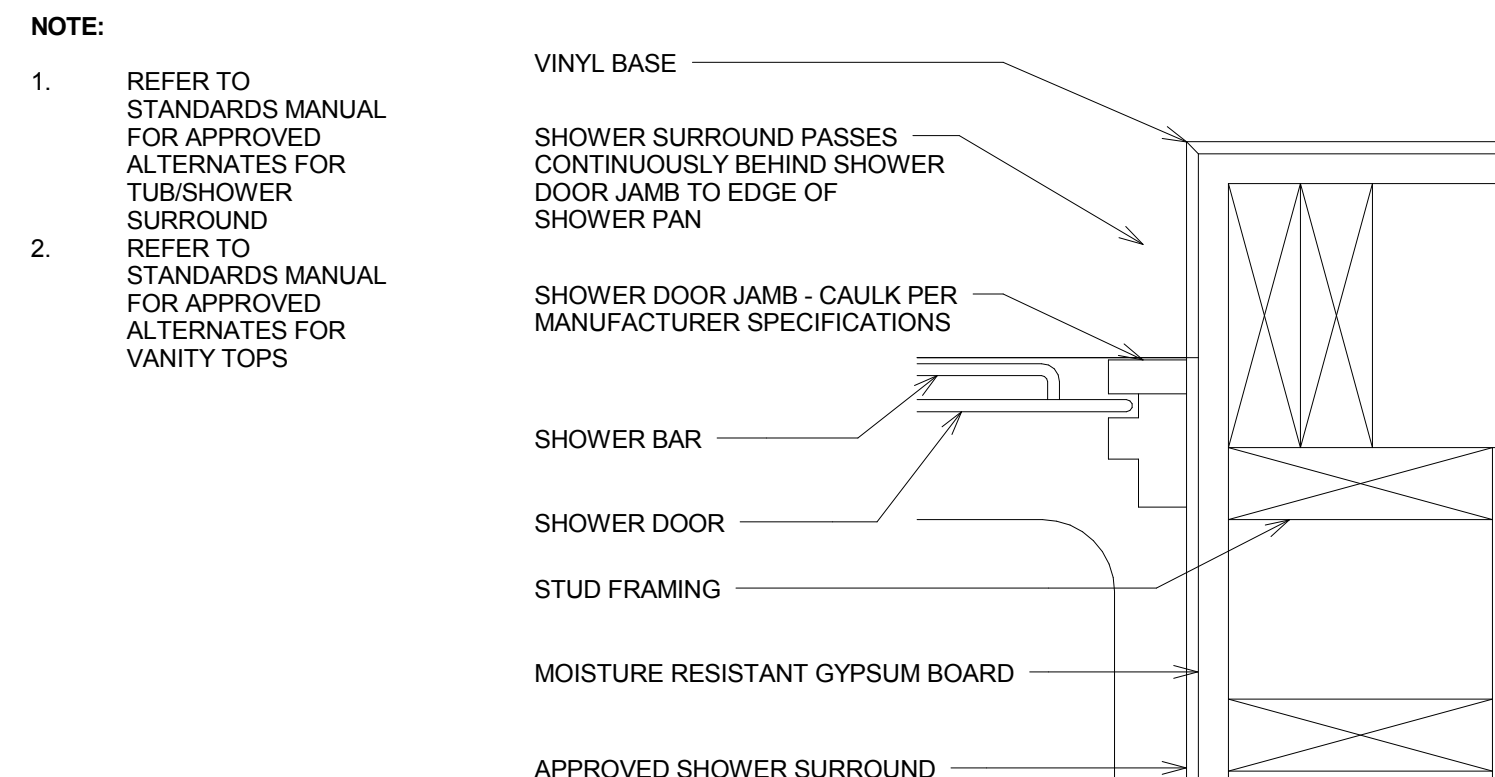
6 ACC. 4'-6" Guest Vanity
1/2" = 1'-0"



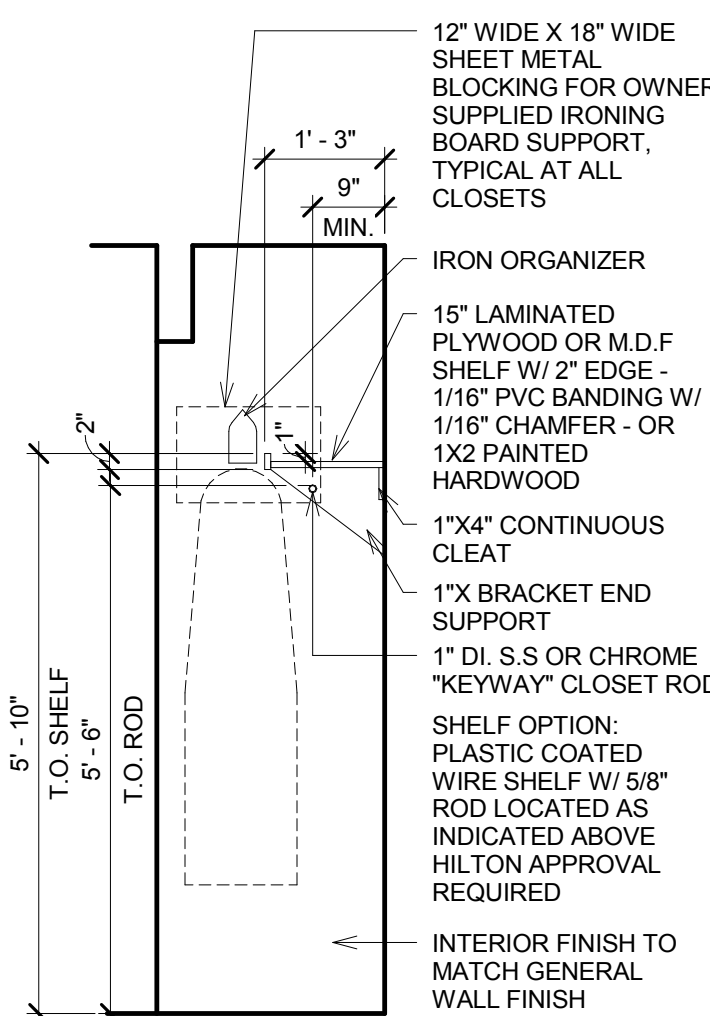
7 Vanity Detail
1/2" = 1'-0"



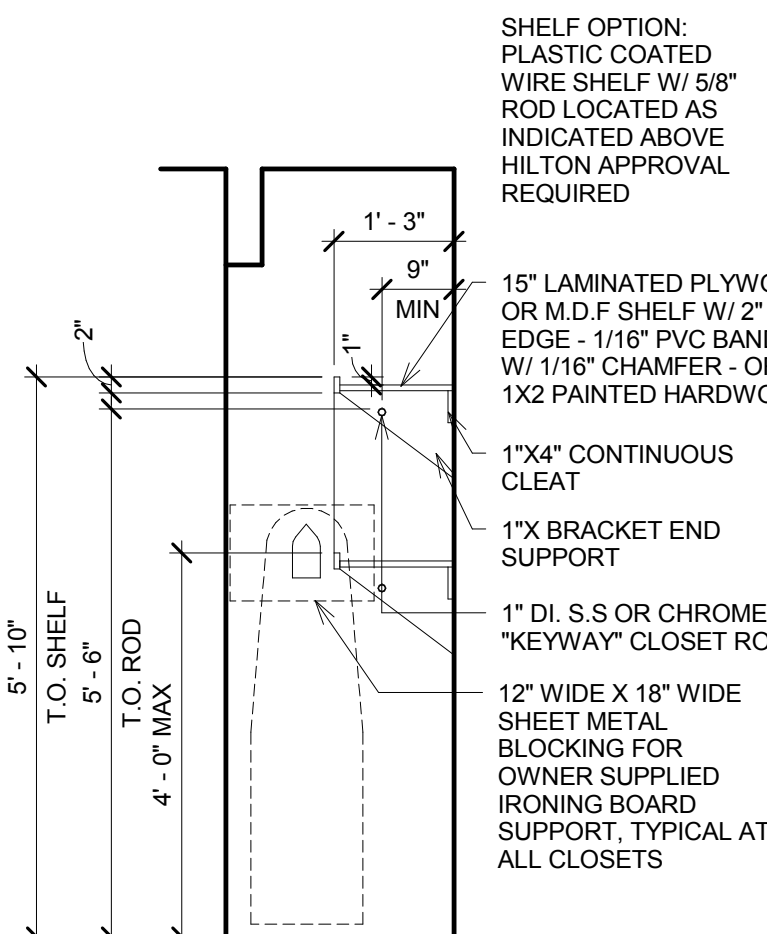
8 ACC. Vanity Detail
1/2" = 1'-0"



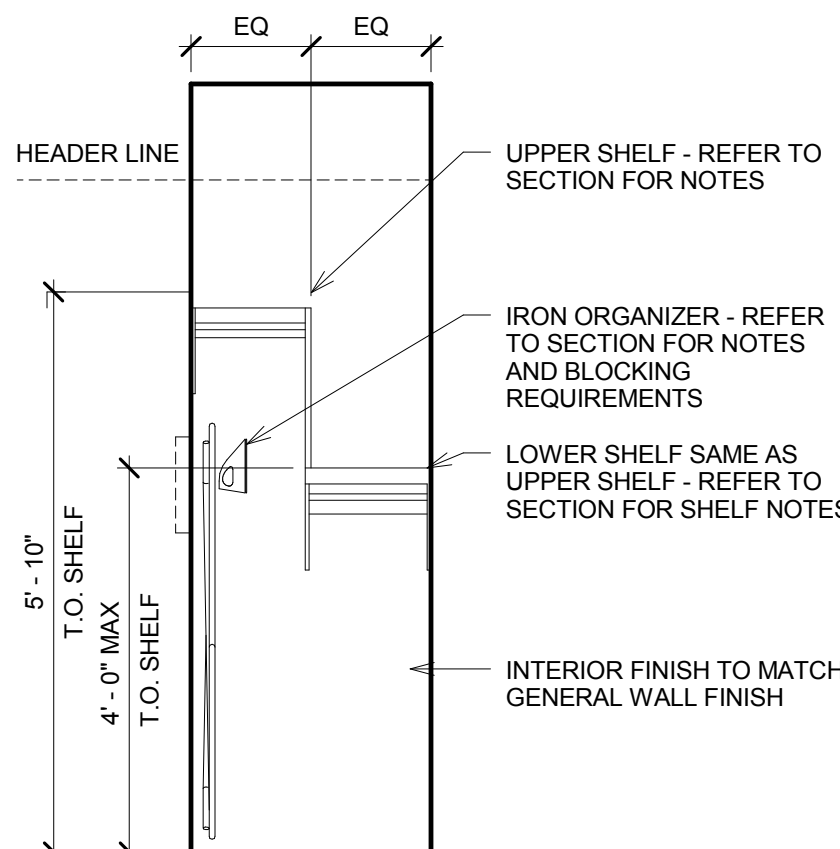
9 Shower Door Detail
3" = 1'-0"



10 Typical Closet Section
1/2" = 1'-0"



11 ADA Closet Section
1/2" = 1'-0"



12 ADA Closet Elevation
1/2" = 1'-0"

GUESTROOM BATH & PUBLIC RESTROOM ACCESSORIES SCHEDULE

TA | 1.1

ID NO.	DESCRIPTION	PARTITION MOUNTED	SURFACE MOUNTED	SEMI-RECESSED	FULLY RECESSED	BLOCKING REQUIRED	REFER TO NOTE #2	WHITE COLOR	STANDARD COLOR	OTHER (REMARKS)	REMARKS
TA 1	TOILET PAPER ROLL HOLDER										
TA 1.1	NOTES TOILET PAPER HOLDER										
TA 1.2	TOILET PAPER DISPENSER										
TA 1.3	DUAL TOILET PAPER HOLDER SEMI-RECESSED										
TA 2	TOWEL/ROBE HOOK SURFACE MTD.										
TA 3	SHOWER CURTAIN ROD (BOWED) SURFACE MTD.										
TA 3.1	SHOWER CURTAIN ROD SURFACE MTD.										
TA 4	12" GRAB BAR SURFACE MTD.										
TA 4.1	18" GRAB BAR SURFACE MTD.										
TA 4.2	24" GRAB BAR SURFACE MTD.										
TA 4.3	36" GRAB BAR SURFACE MTD.										
TA 4.4	42" GRAB BAR SURFACE MTD.										
TA 4.5	48" GRAB BAR SURFACE MTD.										
TA 4.6	GRAB BAR (ACCESSIBILITY) SURFACE MTD.										REFER TO ELEVATIONS FOR DIMENSIONS
TA 4.7	GRAB BAR VERTICAL SURFACE MTD.										
TA 4.8	48" GRAB BAR VERTICAL SURFACE MTD.										
TA 4.9	GRAB BAR VERTICAL SURFACE MTD.										
TA 5	TOWEL BAR SURFACE MTD.										
TA 5.1	METAL TUBE TOWEL RACK SURFACE MTD.										
TA 8	18" TOWEL BAR										
TA 13	MOTION-ACTVATED TOWEL DISPENSER										
TA 13.1	WASTE RECEPTACLE										
TA 14	SANITARY NAPKIN DISPOSAL RECESSED										
TA 17	FOLDING SHOWER SEAT SURFACE MTD.										
TA 18	MIRROR SURFACE MTD.										
TA 20	SOAP DISPENSER SURFACE MTD.										
TA 21	3-SHELF TOWEL HOLDER (SINGLE BEDDED ROOMS)										
TA 22	PAPER TOWEL / SOAP DISPENSER RECESSED										
TA 25	SOAP DISH										
TA 25.1	SOAP DISH CORNER MTD.										
TA 25.2	FOOT REST										

(TA) GENERAL NOTES

1. PROVIDE BLOCKING, OR DIRECT SPOUT SUPPORT, FOR ALL TOILET ACCESSORIES THIS LIST
2. APPROVED METAL FINISHES: POLISHED OR BRUSHED CHROME, BRUSHED NICKEL OR STAINLESS STEEL COORDINATED PER HAMPTON FYI GUESTROOM GUIDE AND FYI PERFORMANCE STANDARDS
3. WALL MOUNTED EQUIPMENT, FIXTURE, ETC. BETWEEN 27" AND 80" A.F.F. SHALL NOT PROTRUDE FURTHER THAN 4" FROM WALL PER ACCESSIBILITY STANDARDS. CONSULT THE HADG FOR FURTHER REQUIREMENTS.
4. ALL CONTROLS FOR USE BY GUESTS MUST BE MOUNTED BETWEEN 15" AFF AND 48" AFF AND PROVIDE A 30"x48" CLEAR FLOOR AREA IN COMPLIANCE WITH ACCESSIBLE STANDARDS. OPERABLE CONTROLS LOCATED OVER AN OBSTRUCTION DEEPER THAN 10" MUST BE MOUNTED NO HIGHER THAN 46" AFF. ACCESSIBLE CONTROLS MUST NOT REQUIRE TIGHT GRASPING, PINCHING, OR TWISTING OF THE WRIST. ACCESSIBLE CONTROLS SHALL COMPLY WITH THE HADG.
5. LIGHTS IN PUBLIC AREA MUST BE ON KEYSWITCHES OR MOTION SENSORS. THE MOTION SENSOR MUST HAVE A DELAY OF THIRTY MINUTES FROM THE LAST DETECTION OF MOVEMENT IN THE DEFINED AREA PRIOR TO SHUT DOWN. ENTRY LIGHT IN PUBLIC RESTROOMS MUST REMAIN ON AT ALL TIMES IN MULTI-STALL RESTROOM.
6. A GFCI/ELCB/RCCB OR EQUAL DUPLEX OUTLET MUST BE LOCATED ON A SIDEWALL OF THE WATER BASIN.

NOTE:

1. REFER TO STANDARDS MANUAL FOR APPROVED ALTERNATES FOR TUBSHOWER SURROUND
2. REFER TO STANDARDS MANUAL FOR APPROVED ALTERNATES FOR VANITY TOPS



ISSUE:

Issued for Permit
08.05.2016

PROJECT: 16-018

Hampton Inn & Suites
New Stanton, PA 15672

OWNER:

Stanton Hospitality LLC
52 Blueberry Lane,
Grove City, PA 16127

THESE DRAWINGS ARE FOR REVIEW OF DESIGN AND SCOPE DESCRIPTION ONLY. NO REPRESENTATION IS MADE TO THE ACCURACY OF THE DRAWINGS WITH RESPECT TO EXISTING DIMENSIONS OR CONDITIONS. ALL CONSULTANTS AND CONTRACTORS MUST VERIFY ANY AND ALL DIMENSIONS AND CONDITIONS WHICH ARE CRITICAL TO THEIR WORK. THESE DRAWINGS ARE INSTRUMENTS OF SERVICE AND ARE THE INTELLECTUAL PROPERTY OF JMAC ARCHITECTS. ANY UNAUTHORIZED USE OR REPRODUCTION IS PROHIBITED.

BATHROOM GENERAL NOTES

1. AT ADJACENT ROOMS, ELECTRICAL OUTLET LOCATIONS, INCLUDING TV AND TELEPHONE OUTLETS, SHALL BE OFFSET 6" FOR INSTALLATION. BACK TO BACK OUTLETS ARE NOT ALLOWED. ELECTRICAL CORDS SHOULD BE HIDDEN FROM VIEW. REFER TO OUTLET DETAIL.
2. LIGHT SWITCH AND G.F.I. OUTLETS CAN BE MOUNTED IN A COMMON 4X4 BOX WITH COVER PLATE. COORDINATE CLEARANCES AS REQUIRED. THE HEIGHT OF ALL SWITCHES, OUTLETS, ETC., TO MEET ACCESSIBILITY STANDARDS AT A MINIMUM AND/OR LOCAL CODE REQUIREMENTS, WHICHEVER IS STRICTER. SWITCHES ON LAMPS MUST BE TOGGLE TYPE.
3. ELECTRICAL OUTLETS AT DESKS ARE TO BE COORDINATED WITH HAMPTON STANDARDS. DEPENDING ON FF&E PROVIDED, CERTAIN OUTLETS MAY NOT BE REQUIRED.
4. CEILING MOUNTED LIGHT FIXTURE AND FAN AT ALL GUEST ROOM BATHS TO BE SWITCHED SEPARATELY FROM LIGHT.
5. SLOPE FLOORS TO DRAIN. SLOPE NOT TO EXCEED 1:48 IN ANY DIRECTION.
6. ANY LIGHT FIXTURES OVER WET AREAS TO BE DAMP LOCATION RATED NW/ SHATTERPROOF LENS.
7. COORDINATE BATH DOOR SWING WITH MOUNTING LOCATION OF CURVED SHOWER ROD AND STYLE OF DOOR STOP.
8. ROLL IN SHOWER COMPARTMENTS ARE REQUIRED IN A MIN NUMBER OF ACCESSIBLE ROOMS PER ACCESSIBILITY REQUIREMENTS. ALL WALLS IN BATH SHALL BE MOISTURE RESISTANT GYPSUM BOARD. CEILING AT BATH SHALL BE EXTERIOR RATED CEILING BOARD.
9. WALL CONSTRUCTION SHOWN FOR REFERENCE ONLY. DESIGNERS OF RECORD SHALL DETERMINE WALL CONSTRUCTION, STRUCTURES, METHOD OF STC COMPLIANCE, ETC.
10. REFER TO GUEST BATH ACCESSORY LEGEND.
11. ACCESSIBLE CLEARANCES INDICATED IN THESE DRAWINGS ARE FOR DESIGN INTENT ONLY. DESIGNER OF RECORD SHALL BE RESPONSIBLE FOR COMPLIANCE WITH ACCESSIBILITY REQUIREMENTS PER LOCAL AND NATIONAL CODES.
12. WALL MOUNTED EQUIPMENT, FIXTURES, ETC. BETWEEN 27" AND 80" A.F.F. SHALL NOT PROTRUDE FURTHER THAN 4" FROM WALL PER ACCESSIBILITY STANDARDS.

No. Issue Date Project Status

Bathroom Accessories and Details

As indicated

A-530